



ANNUAL EXAMINATION (2025-26)
CLASS – VI
MATHEMATICS

Time Allowed: 3 Hours

Maximum Marks: 80

General Instructions:

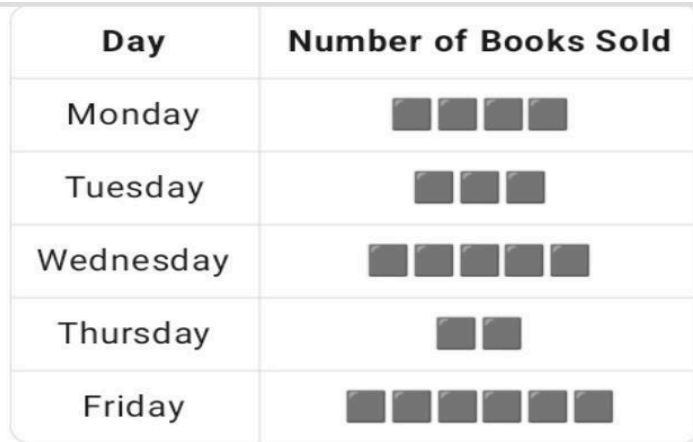
1. This Question Paper contains 6 pages and 32 questions. It has 5 Sections A, B, C, D, E.
2. Section A consists of 10 questions of 1 mark each, Section B consists of 6 questions of 2 marks each, Section C consists of 6 questions of 3 marks each, Section D consists of 5 questions of 4 marks each and Section E consists of 5 questions of 4 marks each.
3. All questions are compulsory.
4. Use of calculators and correction fluid is strictly prohibited.
5. 15 minutes time has been allotted for reading the question paper. No answer should be written in the answer booklet or question paper during this time.

SECTION A: MULTIPLE CHOICE QUESTIONS		1×10
1.	The opposite of 30 km north is _____ a) -30 km south b) 30 km south c) -30 east d) 30 km west	1
2.	How many whole units are there in $7/2$? a) 3 b) 4 c) 5 d) 6	1
3.	All the points of a circle are at the same distance from its a) Vertex. b) sides. c) radius. d) centre.	1
4.	Which of the following is true? a) A line segment has no end points. b) A plane extends endlessly only in one direction. c) A line can be measured. d) A point has no length, breadth or height.	1
5.	How many lines of symmetry does a regular hexagon have ? a) 4 b) 5 c) 6 d) 7	1
6.	The area of a square is 64 cm^2 . What is the length of its side? a) 4 cm b) 6 cm c) 8 cm d) 10 cm	1
7.	Which of the following is not a quadrilateral? a) Square b) Triangle c) Rectangle d) Parallelogram	1
8.	What is the perimeter of a rectangle with length 8 cm and breadth 5 cm? a) 18 cm b) 20 cm c) 22 cm d) 26 cm	1

$$b) \frac{2}{3} + \frac{4}{5} + \frac{3}{4}$$

19.

The following pictograph shows the number of books sold in a week.



(Each  represents 2 books.)

- How many books were sold on Wednesday?
- On which day were the maximum books sold ?
- What is the total number of books sold in a week?

3

20.

Construct a rectangle where one of its sides is 5 cm and the length of a diagonal is 7 cm. (Write the steps also).

3

21.

A group of students reported the number of pets they own. The data is shown below:

Pet Type	Number of Pets
Dogs	18
Cats	12
Rabbits	9
Birds	15


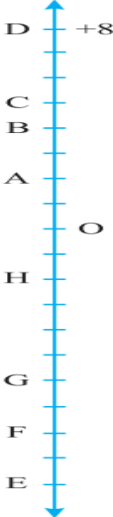

Draw a pictograph where  represents 3 pets.

3

22.

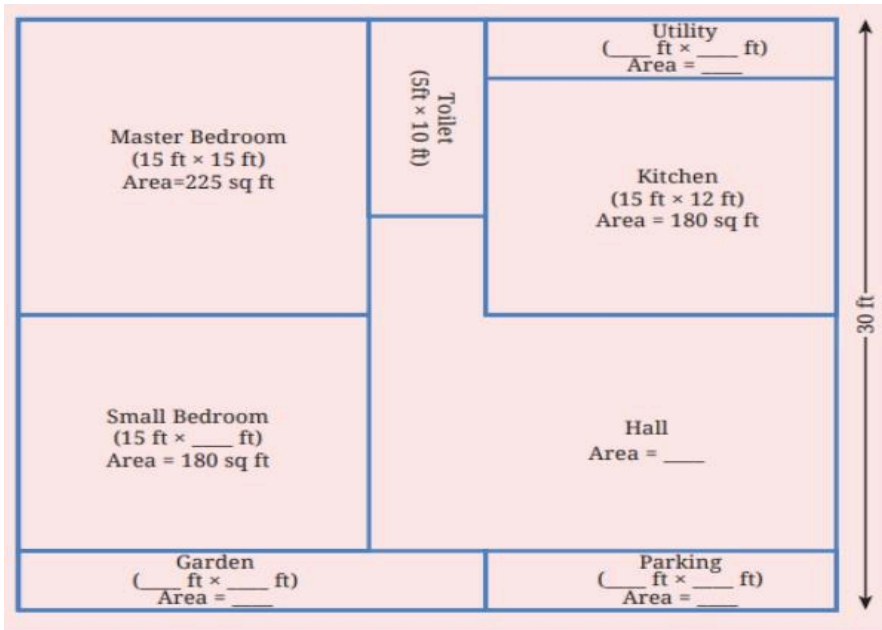
How many tiles whose length and breadth are 12 cm and 5 cm respectively will be required to fit in a rectangular region whose length and breadth are respectively 70 cm and 36 cm?
(Show the stepwise solution).

3

	SECTION D : REAL LIFE CONNECT	5×4
23.	<p>The hands of a clock make different angles at different times. At 1 o'clock, the angle between the hands is 30°. How? What will be the angle at (i) 2 o'clock, (ii) 4 o'clock, (iii) 6 o'clock?</p> 	4
24.	<p>If in the adjacent figure the alphabets A,B,C,D,E,F,G and H are representing the floors of a building, find the numbers of floors if floor D = +8.</p> 	4
25.	<p>Draw an angle using protractor which will show</p> <ol style="list-style-type: none"> the angles at which walls of a square room meet. the angles between scissors' blades. the angles between the clock hands at 2:30. the angles between wall and door, when the door is almost fully open. 	4
26.	<p>Construct a bigger house in which all the sides are of length 7 cm. (Write the steps of construction)</p>	4
27.	<p>This is a picture of the new Parliament Building in Delhi.</p>  <p>a) Does the outer boundary of the picture have reflection symmetry? If so, draw the lines of symmetries. How many are they?</p>	4

	b) Does it have rotational symmetry around its centre? If so, find the angles of rotational symmetry.																			
	SECTION E : CASE BASED QUESTIONS	5×4																		
28.	Suppose you start with ₹0 in your bank account and then you have credits of ₹125, ₹450, ₹608, ₹1000 and debits of ₹56, ₹680, ₹425. Find out now what will be your account balance?	4																		
29.	<p>Faiz prepared a frequency distribution table of data on the number of wickets taken by Jaspreet Bumrah in his last 30 matches.</p> <table border="1" data-bbox="280 573 791 1084"> <thead> <tr> <th>Wickets Taken</th> <th>Number of Matches</th> </tr> </thead> <tbody> <tr><td>0</td><td>2</td></tr> <tr><td>1</td><td>4</td></tr> <tr><td>2</td><td>6</td></tr> <tr><td>3</td><td>8</td></tr> <tr><td>4</td><td>3</td></tr> <tr><td>5</td><td>5</td></tr> <tr><td>6</td><td>1</td></tr> <tr><td>7</td><td>1</td></tr> </tbody> </table> <p>a) What information is this table giving? b) In how many matches has Bumrah taken 4 wickets? c) Figure out the total number of wickets taken by him in the last 30 matches. d) In how many matches he has not taken any wicket?</p>	Wickets Taken	Number of Matches	0	2	1	4	2	6	3	8	4	3	5	5	6	1	7	1	4
Wickets Taken	Number of Matches																			
0	2																			
1	4																			
2	6																			
3	8																			
4	3																			
5	5																			
6	1																			
7	1																			
30.	Rohan's father is a farmer. He has 15 baskets of apples to sell at the market. Each basket contains 8 apples. If Rohan's father wants to pack the apples in bags of 4 apples each, how many bags can he make? (Show at least 4 steps of the solution).	4																		

31.



4

This is the house plan of Charan. It is a rectangular plot. Look at the plan , some of the measurements are given

- Find the missing measurements.
- Find out the area of his house.

32.

Starting from different floors, find the movement required to reach floor (-5). For example if I start at floor +2 , I must press (-7) to reach floor (-5) . Find 4 such starting positions and the movements needed to reach floor (-5) and write the expressions.

4
